

Georgetown

ENGINEERED FOR THE ROAD



A Berkshire Hathaway company.

Georgetown



A Berkshire Hathaway company.

MODEL 364 PEBBLE INTERIOR



EFFICIENT DESIGN. TRUE COMFORT.

The Georgetown series is a nice way to introduce yourself to the RVing lifestyle. Engineered for the road and designed for the driver, our models offer you plenty of storage and all of the amenities at a great price. With five great floorplans and four interiors to choose from, the choice is yours.

The model 364 floorplan is great for families or adults who love to entertain. It features a large galley and spacious dinette that seats friends and family in total comfort. Enjoy a private retreat in the master suite with a standard 32" LED TV, king bed and plenty of storage.

Visit your local dealer today and put yourself in a Georgetown, where efficient design and true comfort come together.

ALL MODELS FRONT BUNK OPTION



MODEL 351/364 BUNK AREA



STANDARDS & OPTIONS

STANDARDS

- Seamless Wrap Over Fiberglass Roof
- Deluxe Solid Surface Kitchen Countertops
- Undermount Stainless Steel Kitchen Sink w/ Flush Solid Surface Covers
- High Rise Kitchen Faucet w/ Pull Out Sprayer
- Fog Lights
- Slam Latch Baggage Doors
- Slide Out Awnings
- Stainless Steel Bathroom Sink
- Dream Dinette
- Huge Rear Storage Compartment
- 30" Entrance Door (most models)
- Water Filtration System – Full Coach
- Outside Shower
- Flush Floor Construction Throughout
- Deluxe Dash w/ Cup Holder
- AM/FM/CD Player
- 3 Point Seat Belts
- Dash Fans
- Soft Touch Driver Passenger Seats
- Soft Touch Hide-A-Bed Sofa with Footrests
- Day/Night Shades
- Slide Out Pantry (W/A)
- 32" TV (40" 328 & 335)
- Full Extension Drawers w/ Roller Bearing Slides
- Power Fan in Bathroom
- 1 Piece Fiberglass Shower
- Arctic Pack w/ Enclosed Tanks
- Solid Pocket Door To Bedroom
- 32" Bedroom TV (Select Models)
- DVD Players In Bunk House (TV/DVD 351, 364)
- 30" Over-The-Range Microwave
- Decorative Kitchen Backsplash
- 5000# Hitch w/ Plug In
- Second Auxiliary Battery
- Automatic Hydraulic Leveling Jacks
- Color Side and Rear Cameras
- Remote/Heated Driver and Passenger Mirrors
- Black Tank Flush
- LED Map, Bunk and Accent Lights
- 15K BTU A/C with Heat Strip in Front
- 6 Gal. G/E DSI Water Heater (x2 364)
- 5.5 KW Onan Gas Generator

POPULAR OPTIONS

- 13.5K BTU Rear A/C w/Heat Strip
- Convection Microwave w/ Oven
- Power Drivers Seat
- Fantastic™ Fan
- Euro Recliner I.P.O. Barrel Chair (328 & 351 only)
- Full Body Exterior Paint
- **Stainless Steel Residential Package:**
22.5 cu. ft. 110v Stainless Residential Refrigerator with 2000 Watt Inverter and (4) House Batteries (dedicated), Stainless Steel Microwave and Oven
- Home Theater System
- Washer/Dryer (328,364 Only)
- Dual Pane Windows
- Sofa I.P.O. J-Dinette (270 only)
- Front Overhead Bunk
- Coach Day/Night Roller Shades
- Front Mount TV (N/A 270 or with Front Overhead Bunk)
- Exterior Entertainment Center (TV, AM/FM Stereo) (N/A 310)
- Passenger Flip-up Workstation w/ Power Center
- Exterior Cargo Tray (N/A 364)

INTERIOR DÉCOR OPTIONS

- Cinnamon
- Moonlight
- Pebble
- Slate

EXTERIOR OPTIONS

- **Prestige Package**
Black
Champagne
- **Full Body Paint**
Blackberry
Firemist
Gun Metal
Onyx

FULL BODY PAINT OPTIONS



BLACKBERRY



FIREMIST



GUN METAL



ONYX

DIMENSIONS & CAPACITIES

MODEL	270S	310DS	328TS	329TS	335DS	351DS	364TS
GCWR (lb.)	23,000	26,000	26,000	26,000	26,000	26,000	26,000
GVWR (lb.)	18,000	20,500	20,500	20,500	20,500	20,500	22,000
GAWR Front	8,000	8,000	8,000	8,000	8,000	8,000	8,000
GAWR Rear	12,000	13,500	13,500	13,500	13,500	13,500	15,000
Wheelbase	178"	208"	208"	208"	208"	228"	242"
Fuel Capacity (gal.)	80	80	80	80	80	80	80
Interior Height	80"	80"	80"	80"	80"	80"	80"
Interior Width	95 1/2"	95 1/2"	95 1/2"	95 1/2"	95 1/2"	95 1/2"	95 1/2"
Overall Height w/AC	12' 1"	12' 1"	12' 1"	12' 1"	12' 1"	12' 1"	12' 1"
Overall Length	28' 10"	32' 10"	34' 4"	34' 11"	34' 11"	35' 9"	37' 6"
Overall Width	101"	101"	101"	101"	101"	101"	101"
Exterior Storage (cu. ft.)	88	112	130	120	100	157	129
Fresh Water (gal.)	50	50	50	50	50	50	50
Black Water (gal.)	42	42	42	42	42	42	84
Grey Water (gal.)	42	42	42	42	42	42	84
LP Tank (gal.)	24	24	29	24	24	24	24
Water Heater (gal.)	6	6	6	6	6	6	6 (2)
Furnace (b.t.u.)	35K	35K	20K & 20K	35K	35K	35K	30K & 20K
Patio Awning	15'	17'	17'	18'	18'	14'	12'
Safety Belt	5	6	7	6	6	6	8

GVWR (Gross Vehicle Weight Rating) – The maximum permissible weight of the unit, including the Unloaded Vehicle Weight (UVW) plus all fluids, occupants, cargo, optional equipment and accessories. For safety and product performance, do not exceed the GVWR.

GCWR (Gross Combined Weight Rating) – The maximum total weight of the loaded unit, plus a tow vehicle. This includes the weight of both the unit and tow vehicle, fuel for each, all other fluids, cargo, occupants, optional equipment and accessories.

GAWR (Gross Axle Weight Rating) – is the maximum permissible weight, including cargo, fluids, optional equipment and accessories that can be safely supported by each axle.

Each Forest River RV is weighed at the manufacturing facility prior to shipping. A label identifying the unloaded vehicle weight of the actual unit and the cargo carrying capacity is applied to every Forest River RV prior to leaving our facilities.

DÉCOR OPTIONS



CINNAMON



MOONLIGHT



PEBBLE



SLATE

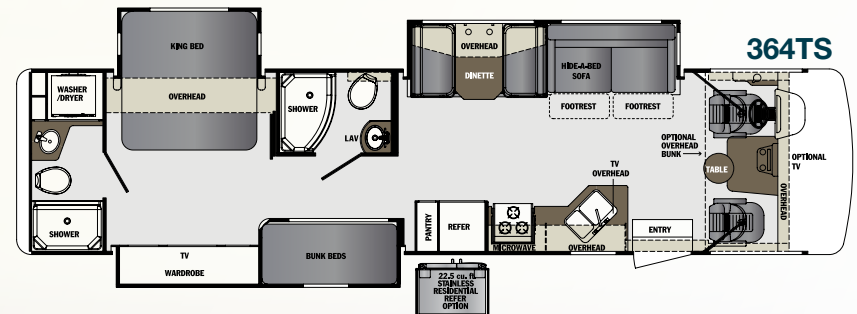
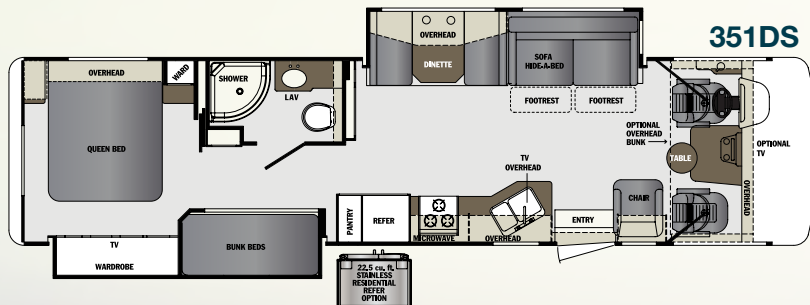
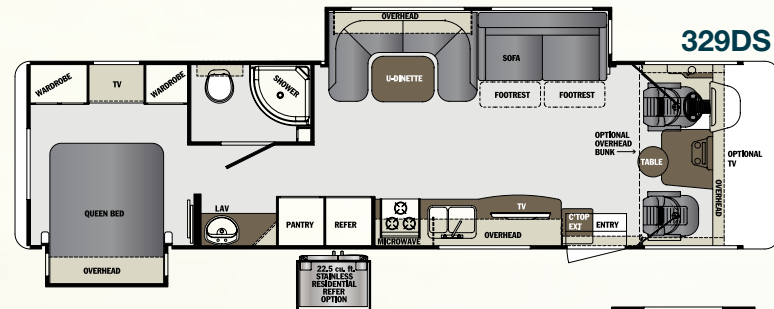
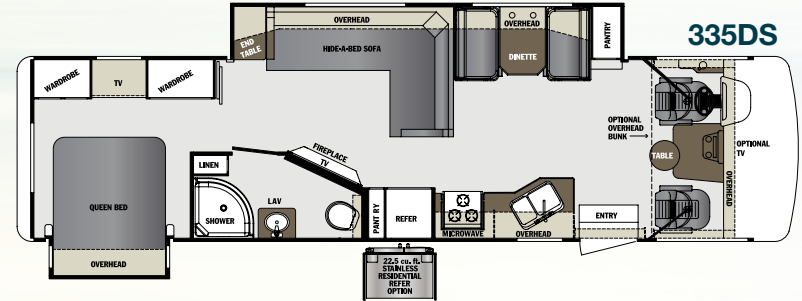
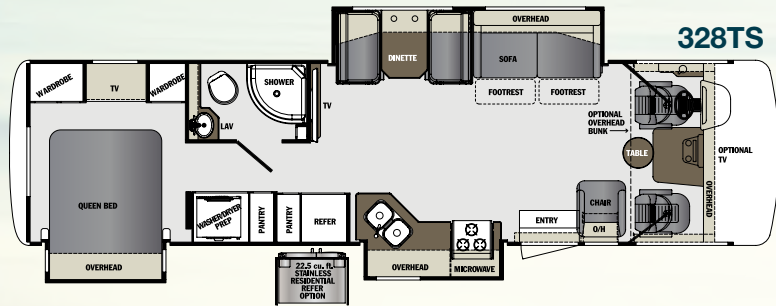
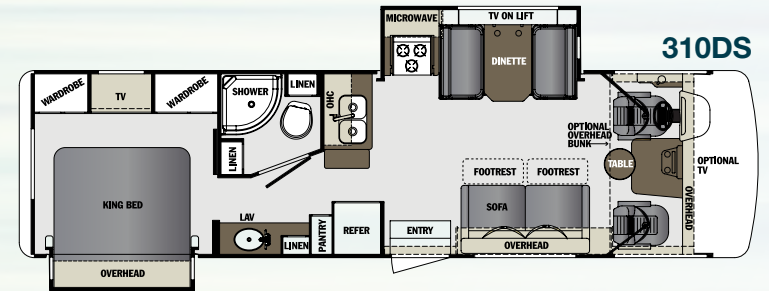
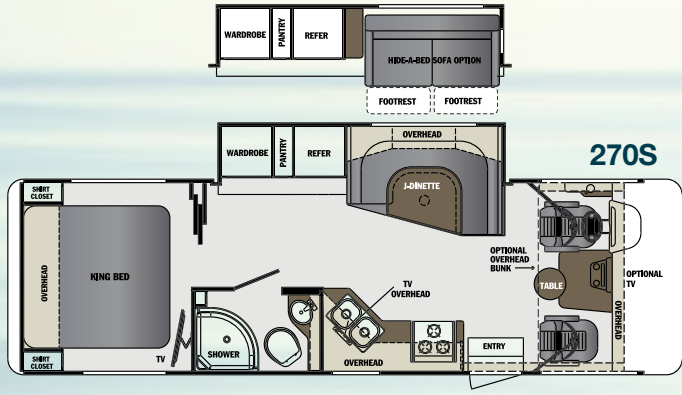


PROVINCIAL
MAPLE



SUGARMAPLE
COUNTERTOP
BY LG

FLOORPLANS





YOUR GEORGETOWN DEALER



A Berkshire Hathaway company.

Forest River, Inc.
58277 State Rd. 19 South
Elkhart, IN 46517
Phone: 574.296.7700
Fax 574.295.8749

www.forestriverinc.com



PRE-DELIVERY INSPECTION FACILITY

20,000 square feet of quality assurance. The bare essentials for a premium product. This state-of-the-art facility gives immediate daily feedback to production for quality assurance in every unit built.

24/7 EMERGENCY ROADSIDE ASSISTANCE

For a worry-free ownership experience

Forest River includes one year of Coach-Net RV Technical & Roadside Assistance with each RV purchase. Whether new to the RV lifestyle or an experienced RV enthusiast, Forest River owners have 24/7 access to technical, operational and emergency road service coverage throughout the US & Canada. Coach-Net's fast, dependable service is just a phone call away.

Coach-Net[®]

RV Technical & Roadside Assistance



Forest River, Inc. encourages our customers to purchase their Forest River products from a local dealership whenever possible for the following reasons:

- 1) Forest River, Inc. dealers are independently owned and operated businesses so priority service and scheduling is at their discretion and is often provided to customers that purchased their unit at that dealership.
- 2) Purchasing locally allows customers to establish meaningful relationships with a dealer, enhancing the RV experience through assistance with product questions, user tips or RV regulations for your state or country, and much more!
- 3) Canadian customers must meet requirements to bring an RV purchased out of the country to their home. These requirements may involve additional inspections and certifications, taxes and fees. Your local Canadian Dealer is a professional at meeting these requirements.
- 4) Scheduling timely warranty repairs and adjustments through a local dealership provides far greater flexibility and convenience to you, the customer!

It is the goal of Forest River, Inc. that all of our RV owners fully enjoy the RV experience and that customer satisfaction meets or exceeds their expectations!



Learn More
Scan this barcode using a QR Reader on your smart phone to learn more about Forest River.



A Berkshire Hathaway company.

All information contained in this brochure is believed to be accurate at the time of publication. However, during the model year, it may be necessary to make revisions and Forest River, Inc., reserves the right to make all such changes without notice, including prices, colors, materials, equipment and specifications as well as the addition of new models and the discontinuance of models shown in this brochure. Therefore, please consult with your Forest River, Inc., dealer and confirm the existence of any materials, design or specifications that are material to your purchase decision. 08/15 20K

©Copyright 2015 Forest River Inc - All Rights Reserved.

GT3

Georgetown

3 SERIES | 5 SERIES
GT3 GT5



GT3 24W3

GT5



GT5 31L5 SHOWN IN CHAMPAGNE

GT5 36B5 SHOWN IN BLACK



A Berkshire Hathaway company.

Georgetown
3 SERIES | 5 SERIES



A Berkshire Hathaway company.



BUILT WITH AMERICA'S #1 SELLING CLASS A MOTORHOME CHASSIS*



You expect more from a Georgetown, which is why we build on a custom Ford F53 Chassis to give our 3 and 5 series motorhomes outstanding horsepower and torque with the premium features and components you demand.



POWERFUL HORSEPOWER AND TORQUE

The powerful Ford 6.8L, 3-Valve Triton V10 gas engine delivers 320 horsepower and 460 lbs.-ft. of torque. A combination of advanced design and technology results in responsive power, performance, and economy. The engine also features a unique fail-safe cooling system and 97,500 mile tune-up interval**.

6-SPEED AUTOMATIC DOUBLE OVERDRIVE TRANSMISSION

The heavy duty TorqShift 6-speed automatic transmission features two overdrive ratios (0.67 and 0.85) for improved vehicle performance. Tow/Haul mode is included to enhance the driver's experience, whether towing or not.

ROBUST STEERING AND 50 DEGREE WHEEL CUT

The Ford Steering System features heavy duty type steering gear and large linkage for outstanding handling characteristics. Maneuverability and parking are enhanced by a 50 degree wheel cut capability and a large, 17.5 inch steering wheel.

HIGH COMPONENTS ELECTRICAL COMPONENTS

The standard, high capacity 175-amp alternator is complemented by a heavy-duty 78-amp hr., 750-CCA battery.

ENHANCED RIDE CHARACTERISTICS

Heavy-duty front and rear stabilizer bars are standard and the FR3 Custom Chassis is equipped with Bilstein front and rear shock absorbers to provide smooth ride characteristics.

*Based on May 2016 CYTD motorhome registration. Source: Statistical Surveys, Inc. **Under normal driving conditions with fluid and filter change.



GT3

page 4

Engineered for the road and designed for the driver, the 3 Series Georgetown offers plenty of storage and all of the luxuries you would expect in a gas Class A. Three great floorplans to choose from with two decor options.

Standard appointments include automatic hydraulic leveling jacks, color side and rear cameras, bedroom and main living LED TVs, custom countertops and Pioneer dash entertainment system with AM/FM/DVD/Bluetooth and USB. Spacious galleys include dream dinettes that seat friends and family in total comfort.

Visit your local dealer today and put yourself in a 3 Series Georgetown, where efficient design and true comfort come together.



GT5

page 8

The 5 Series Georgetown offers more of the luxuries you would expect in a gas Class A, including custom solid surface kitchen countertops and brandy maple cabinets. Three great floorplans to choose from with plenty of storage and three decor options.

Standard appointments include a chrome package, automatic hydraulic leveling jacks, color side and rear cameras, bedroom and main living LED TVs and Pioneer dash entertainment system with AM/FM/DVD/Bluetooth and USB. Spacious galleys include dream or super size dinettes that seat friends and family in total comfort.

Visit your local dealer today and put yourself in a 5 Series Georgetown, where spacious design and true luxury come together.

MODEL 30X3 Undermount Stainless Steel Kitchen Sink, Dream Dinette, Flush Floor Construction, Hide-a-Bed Sofa w/Footrests, 40" LED TV, Brandy Maple Cabinetry





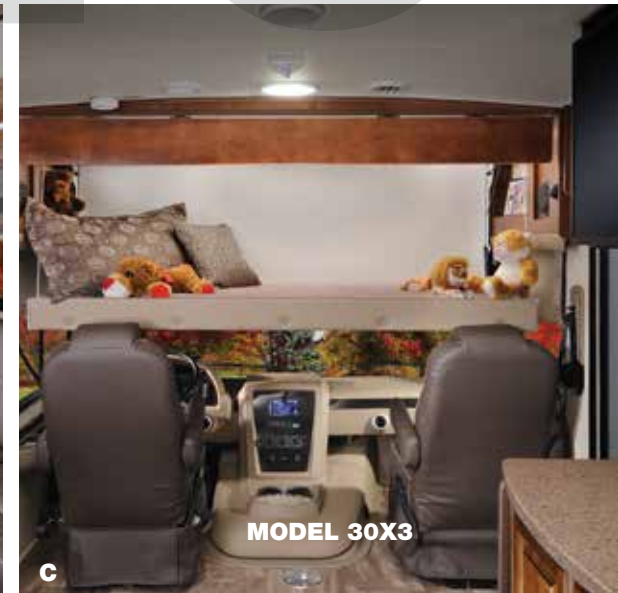
GT3

- A** Night Shades Throughout
Pocket Door to Bedroom
Flip-up Countertop Extension

- B** 24" LED TV in Bedroom

- C** P2K Bunk System
(shown in down position)

- D** P2K Bunk System
(shown in up position)
Power Front Sun Shade



GAT3



MODEL 30X3 TV w/Flip-up Storage



MODEL 30X3 Custom Cockpit Dash



MODEL 24W3 Undermount Stainless Steel Kitchen Sink, Dream Dinette, Flush Floor Construction, 40" LED TV, Brandy Maple Cabinetry

3 SERIES STANDARDS & OPTIONS

STANDARDS

- Fiberglass Roof
- Custom Countertops Throughout
- Undermount Stainless Steel Kitchen Sink
- Front Cap with Lighted Logo and LED Accent Lights
- Automotive Bonded Front Windshield
- Side Hinge Baggage Doors
- Power Patio Awning w/ LED Light Strip
- Slide Out Awnings
- Stainless Steel Bathroom Sink
- Dream Dinette
- "SUPER STORAGE" Rear Cargo Compartment
- 30" Entrance Door
- Outside Shower
- Flush Floor Construction Throughout
- Rotocast Storage Compartments w/ Drains
- Rear Roof Ladder
- Remote/Heated Deluxe Black Exterior Mirrors
- Pioneer Dash Entertainment System w/ AM/FM/DVD/Bluetooth/USB
- Rubber Tread Entry Steps
- Custom Cockpit Dash w/ ABS Side Consoles, Drink Holders, 110V Outlet/USB
- Low Profile Engine Cover w/ Drink Holders
- 3 Point Seat Belts
- Deluxe Driver Passenger Seating
- Hide-A-Bed Sofa w/ Footrests (30X3)
- Jackknife Sofa w/ Footrests (31B3)
- Night Shades Throughout
- 40" LED Main TV
- Full Extension Drawers w/ Roller Bearing Slides
- Heated and Enclosed Holding Tanks w/ Arctic Package
- Pocket Door To Bedroom (30X3, 31B3)
- 24" LED Bedroom TV w/ Flip Up
- 5000# Hitch w/ 7-Way Plug
- Dual Coach Batteries
- Automatic Hydraulic Leveling Jacks
- Color Side and Rear Cameras
- Black Tank Flush
- LED Map, Bunk and Accent Lights
- High Output Quiet Air Command™ Ducted Roof A/C w/ Chill Construction and Heat Pump
- KING Jack™ Digital TV Antenna w/ Mount & Built-in Signal Meter
- 6 Gal. G/E Water Heater
- 4.0 KW Onan Gas Generator

- Vacuum Bonded Gel Coated Sidewalls w/ Graphics
- Steel Front Cockpit Cage
- Triple Power Entry Step
- Rubberized Entry Assist Handle (exterior)
- Stainless Steel Entry Assist Handle (interior)
- Power Front Sun Shade
- Manual Cockpit Side Sun Shades
- Diamond Plate Rubber Floor Covering (driver area)
- Beauflor® Vinyl Flooring Throughout
- 3-Burner Cooktop w/ Oven and Flush Mount Glass Stove Cover
- Flip-up Countertop Extension
- Emergency Start Switch
- Quick Connect Exterior LP Fitting
- Brandy Maple Cabinetry

POPULAR OPTIONS

- Manual Front Overhead Bunk
- P2K Power Front Overhead Bunk
- MaxxAir Power Fan
- Exterior Entertainment Center
- Exterior Camp Kitchen (30X3 only) Refrigerator w/ Freezer, Stainless Steel Sink, Countertop, Separate holding tank, Cabinet w/LED Light, LP Grill w/Quick Connect and Stand

INTERIOR DÉCOR OPTIONS

- Light Sandalwood (Marine-grade Vinyl)
- Espresso (Marine-grade Vinyl)

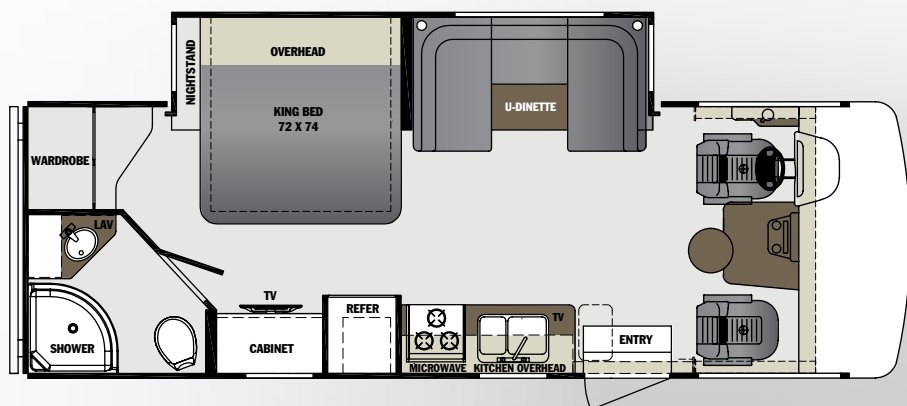
EXTERIOR OPTIONS

- Champagne Colored Exterior Gel Coat

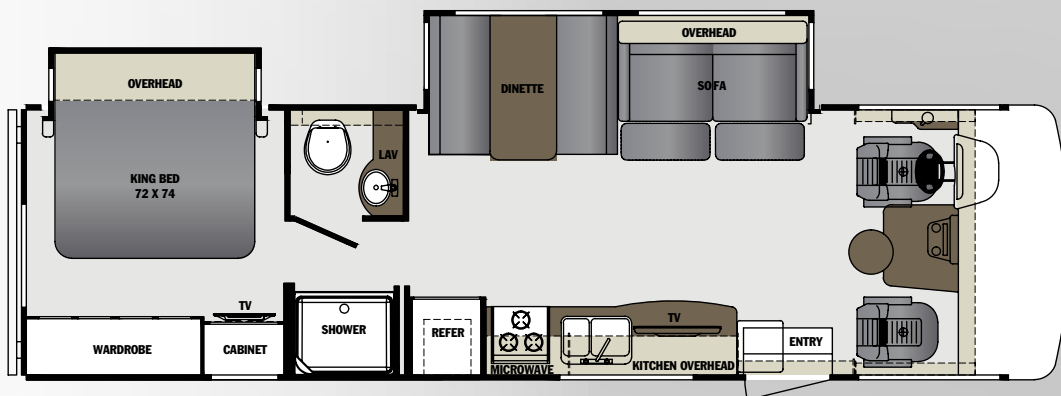


MODEL 30X3

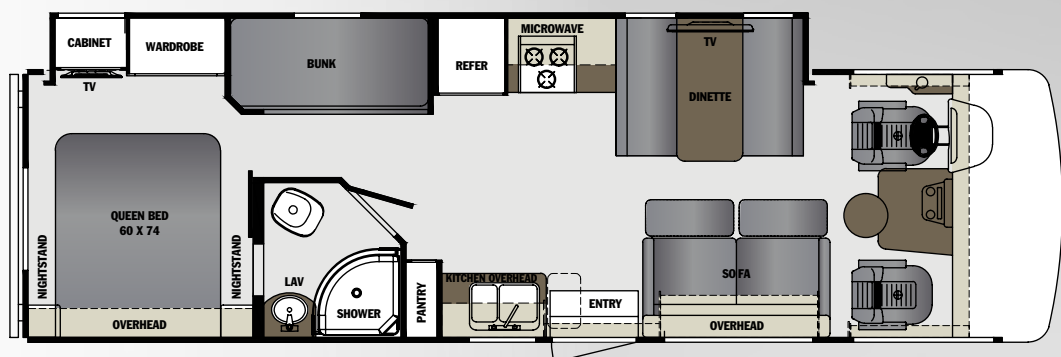
3 SERIES FLOORPLANS



24W3



30X3



31B3

3 SERIES DIMENSIONS & CAPACITIES

	24W3	30X3	31B3
Chassis	Ford F53	Ford F53	Ford F53
Engine	V-10	V-10	V-10
Horsepower	320 HP	320 HP	320 HP
Torque (ft-lbs)	460	460	460
Wheelbase	158"	190"	190"
Fuel Tank (gal)	80	80	80
GVWR (lbs)	16,000	18,000	18,000
GCWR (lbs)	23,000	23,000	23,000
GAWR Front (lbs)	6,500	7,000	7,000
GAWR Rear (lbs)	11,000	12,000	12,000
Exterior Storage (cu ft)	80	133	145
LP Tank (gal)	24.5	24.5	24.5
Fresh Water (gal)	50	50	50
Water Heater (gal)	6	6	6
Grey Tank (gal)	42	42	42
Black Tank (gal)	42	42	42
Length	26' 11"	31' 11"	31' 11"
Exterior Width	99.5"	99.5"	99.5"
Exterior Height	12' 2"	12' 2"	12' 2"
Interior Width	95.5"	95.5"	95.5"
Interior Height	82"	82"	82"
Awning Length	19'	20'	20'
Furnace (BTU)	35K	35K	35K

GVWR (Gross Vehicle Weight Rating) is the maximum permissible weight of the unit when fully loaded. It includes all weights, inclusive of all fluids, occupants, cargo, optional equipment and accessories. For safety and product performance do NOT exceed the GVWR.

GCWR (Gross Combined Weight Rating) is the maximum permissible loaded weight of your motor home and any towed trailer or towed vehicle. Actual GCWR of this vehicle may be limited by the sum of the GVWR and the installed hitch receiver maximum capacity rating; see hitch rating label for detail.

GAWR (Gross Axle Weight Rating) is the maximum permissible weight, including cargo, fluids, optional equipment and accessories that can be safely supported by each axle.

UVW (Unloaded Vehicle Weight) * is the typical weight of the unit as manufactured at the factory. It includes all weight at the unit's axle(s), including full fuel, all fluids and LP Gas. The UVW does not include cargo, fresh potable water, additional optional equipment or dealer installed accessories.

*Estimated Average based on standard build optional equipment.

CCC (Cargo Carrying Capacity) ** is the amount of weight available for fresh potable water, cargo, passengers, additional optional equipment and accessories. CCC is equal to GVWR minus UVW. Available CCC should accommodate fresh potable water (8.3 lbs per gallon). Before filling the fresh water tank, empty the black and gray tanks to provide for more cargo capacity.

** Estimated average based on standard build optional equipment

Each Forest River RV is weighed at the manufacturing facility prior to shipping. A label identifying the unloaded vehicle weight of the actual unit and the cargo carrying capacity is applied to every Forest River RV prior to leaving our facilities.

The load capacity of your unit is designated by weight, not by volume, so you cannot necessarily use all available space when loading your unit.

Actual towing capacity is dependent upon your particular loading and towing circumstances, which includes the GVWR, GAWR and GCWR as well as adequate trailer brakes. Please refer to the Operator's Manual of your vehicle for further towing information.



MODEL 36B5 Dream Dinette, Soft Touch Seating Surfaces, Atwood Air Command A/C, Flush Floor Construction, Hide-a-Bed Sofa w/ footrests, Stainless Appliance Package, Large LED TV w/Flip-up Bracket, Solid Surface Countertops with Undermount Sink & Pullout Kitchen Faucet



GT5

MODEL 36B5 (shown right)

A Tile Backsplash

Deep Slideouts
w/ Windows in End Walls

18 cu. ft. Stainless Gas/
Electric Refrigerator

Solid Surface Countertop
Extension

Raised Panel Cabinet Doors

B 72" x 80" Residential King Size Bed

32" LED TV
w/ Flip-up Bracket,

Opposing Slides on 36B5
create plenty of walking room
Pocket Bathroom Door

C Oversized Bunks w/ TV/DVD Entertainment Systems



5 SERIES STANDARDS & OPTIONS

STANDARDS

• CHROME PACKAGE

- Chrome Headlight Bezels
- Chrome Foglight Bezels
- Chrome Mirrors & Logos
- Fiberglass Roof
- Solid Surface Kitchen Countertops
- Undermount Stainless Steel Kitchen Sink w/ Spring Loaded Faucet
- Front Cap with Lighted Logo and LED Accent Lights
- Automotive Bonded Front Windshield w/Backlit Logo
- Slam Latch Side Hinge Baggage Doors
- Metal Encased Power Patio Awning w/ LED Light Strip
- Slide Out Awnings
- Stainless Steel Bathroom Sink
- Dream Dinette

- Super Size Dinette (31L5, 31R5)
- "SUPER STORAGE" Rear Cargo Compartment
- 30" Entrance Door
- Outside Shower
- Flush Floor Construction Throughout
- Rotocast Storage Compartments w/ Drains
- 2000 Watt Coach Inverter
- Rear Roof Ladder
- Pioneer Dash Entertainment System w/ AM/FM/DVD/Bluetooth/USB
- Rubber Tread Entry Steps
- Custom Cockpit Dash w/ ABS Side Consoles, Drink Holders, 110V Outlet/USB
- Low Profile Engine Cover w/ Drink Holders
- 3 Point Seat Belts
- Deluxe Driver Passenger Seating
- Hide-A-Bed Sofa w/ Footrests (31R5, 36B5)
- Jackknife Sofa w/ Footrests (31L5)
- MyRV™ Touch Screen w/ Wireless Technology →
- Day/Night Shades Throughout
- 40" LED Main TV
- Full Extension Drawers w/ Roller Bearing Slides
- Heated and Enclosed Holding Tanks w/ Arctic Package
- Quick Latch Pocket Door To Bedroom
- 32" LED Bedroom TV w/ Flip Up
- 5000# Hitch w/ 7-Way Plug
- Dual Coach Batteries
- Automatic Hydraulic Leveling Jacks
- Color Side and Rear Cameras
- One-way Audio on Backup Camera
- Black Tank Flush
- LED Map, Bunk and Accent Lights
- High Output Quiet Air Command™ Ducted Roof A/C with Chill Construction and Heat Pump
- KING Jack™ Digital TV Antenna w/ Mount & Built-in Signal Meter
- 6 Gal. G/E Water Heater (x2 36B5)
- 5.5 KW Onan Gas Generator
- Vacuum Bonded Gel Coated Sidewalls w/ Graphics and Partial Paint
- Steel Front Cockpit Cage
- Triple Power Entry Step
- Rubberized Entry Assist Handle (exterior)
- Stainless Steel Entry Assist Handle (interior)
- Power Front Sun Shade
- Manual Cockpit Side Sun Shades
- Diamond Plate Rubber Floor Covering (driver area)
- Beauflor® Vinyl Flooring Throughout
- 18 cu. ft. Gas/Electric Norcold Refrigerator
- 3-Burner Cooktop w/ Oven and Flush Mount Glass Stove Cover
- Flip-up Solid Surface Countertop Extension
- Emergency Start Switch
- Quick Connect Exterior LP Fitting
- Brandy Maple Cabinetry
- Raised Panel Cabinet Doors w/ Hidden Hinges



EXTERIOR OPTIONS

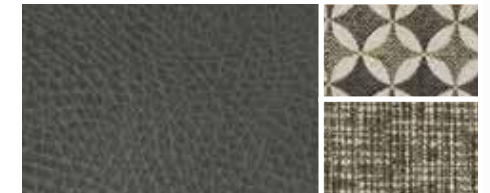
- Champagne Partial Paint Package
- Black Partial Paint Package

FULL BODY PAINT OPTIONS

- Firemist
- Onyx
- Blackberry
- Gun Metal

INTERIOR DÉCOR OPTIONS

• Mink



• Toffee



• Desert Wood



MODEL 31L5 Fireplace



MODEL 31L5 Expandable L-Shape Sofa
Upgraded Window Treatments



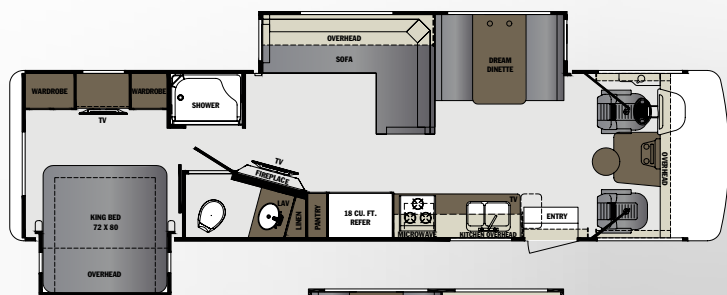
MODEL 31L5

- One Piece Fiberglass Shower w/Seat
- Stainless Steel Sink Bowl
- Porcelain Stool
- Upgraded Bathroom Lighting Package

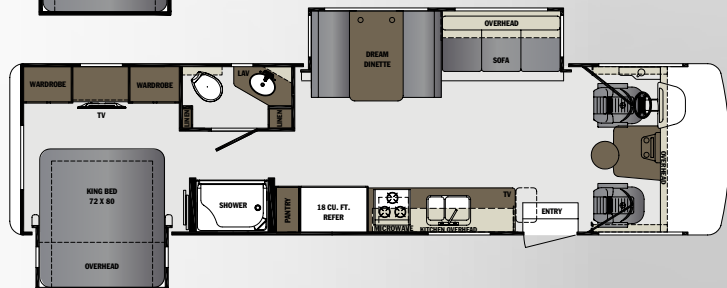
POPULAR OPTIONS

- Manual Front Overhead Bunk
- P2K Power Front Overhead Bunk
- Convection Microwave w/ Oven
- Power Drivers Seat
- Dual Pane Windows
- Day/Night Roller Shades
- Front Mount TV (N/A w/ Front Overhead Bunk)
- Exterior Cargo Tray
- Passenger Flip Up Workstation

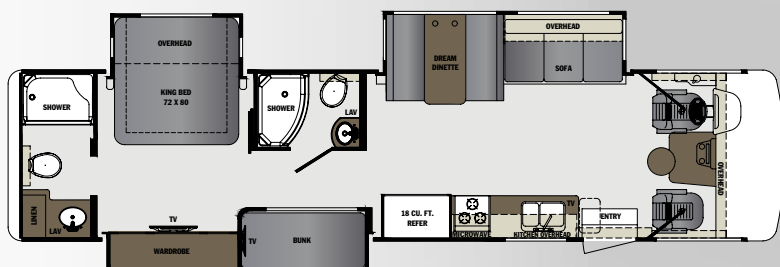
5 SERIES FLOORPLANS



31L5



31R5



36B5

5 SERIES FULL BODY PAINT OPTIONS



BLACKBERRY



FIREMIST



GUN METAL



ONYX

5 SERIES DIMENSIONS & CAPACITIES

	31L5	31R5	36B5
Chassis	Ford F53	Ford F53	Ford F53
Engine	V-10	V-10	V-10
Horsepower	320 HP	320 HP	320 HP
Torque (ft-lbs)	460	460	460
Wheelbase	208"	208"	242"
Fuel Tank (gal)	80	80	80
GVWR (lbs)	20,500	20,500	22,000
GCWR (lbs)	26,000	26,000	26,000
GAWR Front (lbs)	7,500	7,500	8,000
GAWR Rear (lbs)	13,500	13,500	15,000
Exterior Storage (cu ft)	136	136	161
LP Tank (gal)	24.5	24.5	24.5
Fresh Water (gal)	82	82	82
Water Heater (gal)	6	6	6 + 6 = 12
Grey Tank (gal)	42	42	42 + 42 = 84
Black Tank (gal)	42	42	42 + 42 = 84
Length	34' 11"	34' 11"	37' 11"
Exterior Width	99.5"	99.5"	99.5"
Exterior Height	12' 3 1/2"	12' 3 1/2"	12' 5 1/2"
Interior Width	95.5"	95.5"	95.5"
Interior Height	82"	82"	82"
Awning Length	19'	19'	12' 6"
Furnace (BTU)	35K	35K	30K/20K

GVWR (Gross Vehicle Weight Rating) is the maximum permissible weight of the unit when fully loaded. It includes all weights, inclusive of all fluids, occupants, cargo, optional equipment and accessories. For safety and product performance do NOT exceed the GVWR.

GCWR (Gross Combined Weight Rating) is the maximum permissible loaded weight of your motor home and any towed trailer or towed vehicle. Actual GCWR of this vehicle may be limited by the sum of the GVWR and the installed hitch receiver maximum capacity rating; see hitch rating label for detail.

GAWR (Gross Axle Weight Rating) is the maximum permissible weight, including cargo, fluids, optional equipment and accessories that can be safely supported by each axle.

UVW (Unloaded Vehicle Weight) * is the typical weight of the unit as manufactured at the factory. It includes all weight at the unit's axle(s), including full fuel, all fluids and LP Gas. The UVW does not include cargo, fresh potable water, additional optional equipment or dealer installed accessories.

*Estimated Average based on standard build optional equipment.

CCC (Cargo Carrying Capacity) ** is the amount of weight available for fresh potable water, cargo, passengers, additional optional equipment and accessories. CCC is equal to GVWR minus UVW. Available CCC should accommodate fresh potable water (8.3 lbs per gallon). Before filling the fresh water tank, empty the black and gray tanks to provide for more cargo capacity.

** Estimated average based on standard build optional equipment

Each Forest River RV is weighed at the manufacturing facility prior to shipping. A label identifying the unloaded vehicle weight of the actual unit and the cargo carrying capacity is applied to every Forest River RV prior to leaving our facilities.

The load capacity of your unit is designated by weight, not by volume, so you cannot necessarily use all available space when loading your unit.

Actual towing capacity is dependent upon your particular loading and towing circumstances, which includes the GVWR, GAWR and GCWR as well as adequate trailer brakes. Please refer to the Operator's Manual of your vehicle for further towing information.

GT3



MODEL 24W3

GT5



MODEL 36B5



MODEL 31L5



Forest River Owner "Digital Kit" App

Now you can have your Owner's Manual with you wherever you are. Download our FREE App from the App Store or Google Play and you'll have the information right at your fingertips.

24/7 EMERGENCY ROADSIDE ASSISTANCE

For a worry-free ownership experience Forest River includes one

year of Coach-Net RV Technical & Roadside Assistance with each RV purchase. Whether new to the RV lifestyle or an experienced RV enthusiast, Forest River owners have 24/7 access to technical, operational and emergency road service coverage throughout the US & Canada. Coach-Net's fast, dependable service is just a phone call away.

Coach-Net®

RV Technical & Roadside Assistance



www.ForestRiverBuyLocal.com



A Berkshire Hathaway company.

Forest River, Inc.
Gas Class A Division
902 County Rd. 1
Elkhart, IN 46515
Phone: 574.367.3285
Fax 574.327.2692

www.forestriverinc.com



PRE-DELIVERY INSPECTION FACILITY

20,000 square feet of quality assurance. The bare essentials for a premium product. This state-of-the-art facility gives immediate daily feedback to production for quality assurance in every unit built.

FREE MEMBERSHIP

to Forest River Owners' Group

www.forestriverfrog.com



YOUR 3 SERIES/5 SERIES GEORGETOWN DEALER



Learn More
Scan this barcode using a QR Reader on your smart phone to learn more about Forest River.



A Berkshire Hathaway company.

All information contained in this brochure is believed to be accurate at the time of publication. However, during the model year, it may be necessary to make revisions and Forest River, Inc., reserves the right to make all such changes without notice, including prices, colors, materials, equipment and specifications as well as the addition of new models and the discontinuance of models shown in this brochure. Therefore, please consult with your Forest River, Inc., dealer and confirm the existence of any materials, design or specifications that are material to your purchase decision. 01/17 40K

©Copyright 2017 Forest River Inc - All Rights Reserved.

Georgetown XL

LUXURY ON THE ROAD



A Berkshire Hathaway company.

Georgetown XL



A Berkshire Hathaway company.

MODEL 369



MODEL 369

High Gloss Solid Wood Cabinetry, Villa Comfort Dinette, Stainless Steel Appliances, Solid Surface Countertop, High End Residential Backsplash,



MODEL 369

Solid Wood Interior Doors with Frosted Glass
Upgraded Pillow Top Mattress in the Bedroom
Porcelain Vessel Bowls with Euro Plumbing Fixtures in Bathroom

INVITING DESIGN. ENGINEERED COMFORT.

The beautiful new Georgetown XL by Forest River has taken fine appointments to the next level. With soft-touch seating surfaces, high-gloss solid wood cabinetry, high-end vinyl plank flooring and frosted glass door inserts, you'll find our three thoughtfully-designed floorplans hard to choose from. Standard features include 84" interior headroom and beds 80" in length to bring you maximum comfort and enjoyment.

The Georgetown XL is the epitome of true luxury on the road. The salon area is wide open and inviting with a fireplace, large LED TV and plenty of room to move around. The kitchen features stainless steel appliances including a commercial grade cooktop with cast iron grates, residential 20 cu. ft. refrigerator and convection microwave oven. Solid surface countertops with undermount sinks and flush solid surface covers, a countertop extension and abundant cabinet storage make your galley complete.

We've incorporated an aerodynamic front cap and one of the industry's largest windshields, offering panoramic views second to none. Add a stunning paint package and you have the most distinctive gas coach in the marketplace. Visit your local dealer today and put yourself in a Georgetown XL, where inviting design and engineered comfort come together.

STANDARDS & OPTIONS

STANDARDS

- 24,000 lbs. GVWR Ford F-53 Chassis
- Rotocast One-Piece Storage Compartments
- Cable TV and Phone Jacks
- One-Piece Windshield
- LED Clearance and Tailights
- 4 Coach Batteries
- Day/Night Roller Blinds Throughout
- Triple Entrance Step – Electric
- Hitch 5000 LB.
- Automatic Hydraulic Leveling Jacks
- Rear Ladder
- Outside Shower
- Slideout Room Awning(s)
- Power Patio Awning with LED Light Strip
- 30" Entrance Door
- Remote Heated Mirrors
- TV Antenna with Booster
- 22.5" Tires with Polished Aluminum Wheels
- Insulated, Formed One-Piece Baggage Doors
- 3" Laminated, Steel Framed Floor with Ducted Heating
- Laminated Aluminum Framed Sidewalls, Roof (Including All Openings)
- Under Floor Steel Truss System
- 6-Way Power Driver's Seat with Automatic Footrest
- Passenger Seating with Automatic Footrest
- Solid Wood Cockpit Table
- Auxiliary Start Switch
- Defroster Fans
- Power Front Sun Visor and Manual Side Shades
- Driver/Passenger LED Map Lights
- Soft Touch Vinyl Ceiling
- Upgraded Interior Lighting Package
- Pioneer Dash Entertainment System w/ AM/FM/DVD/Bluetooth/USB
- Radio Power Selector Switch
- Rear Vision Camera with Monitor & Audio
- Color Side and Rear Cameras
- Shaw Residential Tongue and Groove Vinyl Plank Flooring
- 90 Sheen High Gloss Solid Wood Amish Cabinetry
- Raised Panel Cabinet Doors w/Hidden Hinges and Brushed Nickel Grab Handles & Pulls

• STAINLESS PACKAGE:

- Stainless Steel Residential 20 cu. ft. Refrigerator with Water and Ice Maker
- Furrion Commercial Grade Stainless Cooktop with Sealed Burners and Removable Cast Iron Grates
- Furrion Commercial Grade Stainless Oven
- Stainless Steel Convection Microwave
- High End Residential Backsplash
- Solid Surface Kitchen Countertop with Sink Cover
- Solid Surface Countertop Extension
- Under Mount Stainless Steel Sink with Pull-Out Sprayer
- Flush Mount Solid Surface Range Covers
- Flush Mount LED Ceiling and Accent Lighting
- Carpet Free Step Well
- Satellite Prep
- Full Extension Ball Bearing Drawer Guides
- Slide Out Pantry (where available)
- 40" LED TV with Home Theater
- Electric Fireplace
- Villa L-Shaped Sofa
- Euro Recliner with Ottoman (Opt.) (Std. 378)
- Soft Touch Leatherette Hide-A-Bed Sofa with Footrests
- Villa Comfort Dinette
- Upgraded Window Treatments with Solid Wood Inserts
- 10 Gallon Gas/Electric Water Heater with DSI
- White Porcelain Vessel Bathroom Sinks with Euro Plumbing Fixtures
- Dual Control Shower Faucet with Flex Head
- Interior Doors with Frosted Glass Inserts and Brushed Nickel Hardware
- Medicine Cabinet
- Porcelain Toilet with Foot Flush
- Black Water Tank Flush System
- Upgraded Bathroom Light Bars
- Shower Skylight
- Towel Bar
- Washer Dryer Prep
- One-Piece Fiberglass Molded Shower with Integrated Seat
- Frosted Glass Shower Door with Brushed Nickel
- 60" X 80" Island Queen Bed with Bedspread, Headboard, Pillow Shams and Storage Below (72" X 80" King Bed on 369)

- Upgraded Bedroom Pillowtop Mattress
- Radius Corner Mattress and Bed Base
- Oversized Wardrobe with Pullout Doors
- Slide Lock Pocket Doors
- 32" LED Bedroom Flip-UP TV (Select Models)
- Exterior Entertainment Center with LED TV
- 110V GFI Protected Circuit (Kitchen, Bath, Exterior)
- Automatic Transfer Switch
- Carbon Monoxide Detector
- Exit Window
- LPG Detector
- Smoke Alarm
- 3-Point Seat Belts
- Recess Mounted Fire Extinguisher (Inside Entry Door)
- 50 Amp 120V Distribution Panel and Cord
- 70 Amp 12V Power Converter
- Power Vent in Kitchen
- Arctic Package with Enclosed Holding Tanks
- Whole House Water Filtration System
- 35,000 BTU Furnace
- Models 377, 378, Two Furnaces (35,000 & 20,000 BTU)
- Electric Battery Disconnect
- 5.5KW Onan Generator
- Power Ceiling Fan in Bath
- 15K A/C with Heat Strip (Front)
- 13.5K A/C with Heat Strip (Rear)
- Fiberglass Roof

POPULAR OPTIONS

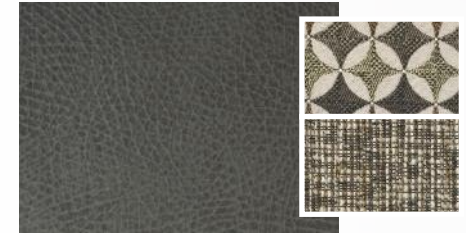
- Outside Entertainment Center
- Front Mount 32" TV (N/A with Front Overhead Bunk)
- Front Overhead Bunk
- L-Shape Sofa (378 only)
- Free Standing Dinette with 4 Chairs (Std. on 378)
- Drivers Side Door
- Rear Mudflap
- Dual Pane Windows
- Dishwasher (369 only)
- Washer/Dryer Combo

EXTERIOR OPTIONS

- **Prestige Package**
 - Black
 - Champagne
- **Full Body Paint**
 - Blackberry
 - Firemist
 - Gun Metal
 - Onyx

INTERIOR DÉCOR OPTIONS

• Mink



• Toffee



• Desert Wood



DIMENSIONS & CAPACITIES

MODEL	369DS	377TS	378TS
Chassis	Ford F53	Ford F53	Ford F53
Engine	V-10	V-10	V-10
Horsepower	320 HP	320 HP	320 HP
Torque (ft-lbs)	460	460	460
Wheelbase	242"	242"	242"
Fuel Capacity (gal.)	80	80	80
GCWR (lb.)	30,000	30,000	30,000
GVWR (lb.)	24,000	24,000	24,000
GAWR Front	9,000	9,000	9,000
GAWR Rear	15,500	15,500	15,500
Tire Size	255/80R 22.5	255/80R 22.5	255/80R 22.5
Interior Height	84"	84"	84"
Interior Width	95 1/2"	95 1/2"	95 1/2"
Overall Height w/AC	12' 8"	12' 8"	12' 8"
Overall Length	37' 11"	37' 11"	37' 4"
Overall Width	101"	101"	101"
Exterior Storage (cu. ft.)	190	197	198
Fresh Water (gal.)	65	65	65
Black Water (gal.)	84	42	42
Grey Water (gal.)	84	42	42
LP Tank (gal.)	24	24	24
Water Heater (gal.)	10	10	10
Furnace (BTU)	35K	35K & 20K	35K & 20K
Patio Awning	17'	20'	20'

GVWR (Gross Vehicle Weight Rating) is the maximum permissible weight of the unit when fully loaded. It includes all weights, inclusive of all fluids, occupants, cargo, optional equipment and accessories. For safety and product performance do NOT exceed the GVWR.

GCWR (Gross Combined Weight Rating) is the maximum permissible loaded weight of your motor home and any towed trailer or towed vehicle. Actual GCWR of this vehicle may be limited by the sum of the GVWR and the installed hitch receiver maximum capacity rating; see hitch rating label for detail.

GAWR (Gross Axle Weight Rating) is the maximum permissible weight, including cargo, fluids, optional equipment and accessories that can be safely supported by each axle.

UVW (Unloaded Vehicle Weight) * is the typical weight of the unit as manufactured at the factory. It includes all weight at the unit's axle(s), including full fuel, all fluids and LP Gas. The UVW does not include cargo, fresh potable water, additional optional equipment or dealer installed accessories.

*Estimated Average based on standard build optional equipment.

CCC (Cargo Carrying Capacity) ** is the amount of weight available for fresh potable water, cargo, passengers, additional optional equipment and accessories. CCC is equal to GVWR minus UVW. Available CCC should accommodate fresh potable water (8.3 lbs per gallon). Before filling the fresh water tank, empty the black and gray tanks to provide for more cargo capacity.

** Estimated average based on standard build optional equipment

Each Forest River RV is weighed at the manufacturing facility prior to shipping. A label identifying the unloaded vehicle weight of the actual unit and the cargo carrying capacity is applied to every Forest River RV prior to leaving our facilities.

The load capacity of your unit is designated by weight, not by volume, so you cannot necessarily use all available space when loading your unit.

Actual towing capacity is dependent upon your particular loading and towing circumstances, which includes the GVWR, GAWR and GCWR as well as adequate trailer brakes. Please refer to the Operator's Manual of your vehicle for further towing information.

FULL BODY PAINT OPTIONS



BLACKBERRY



FIREMIST



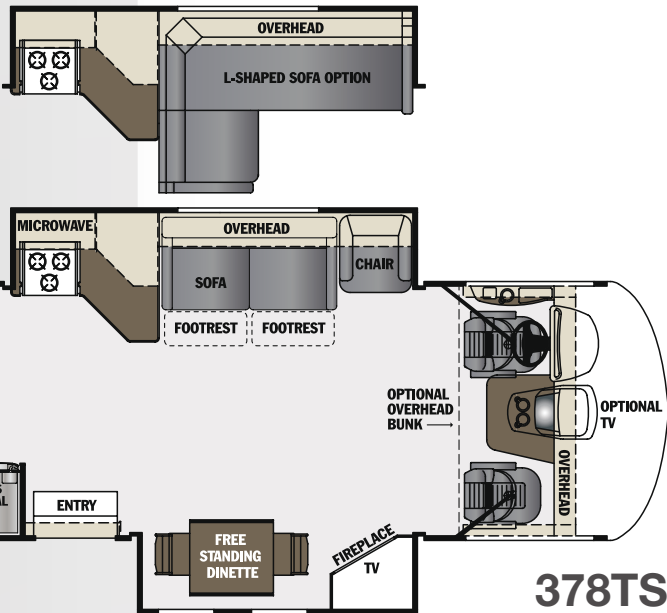
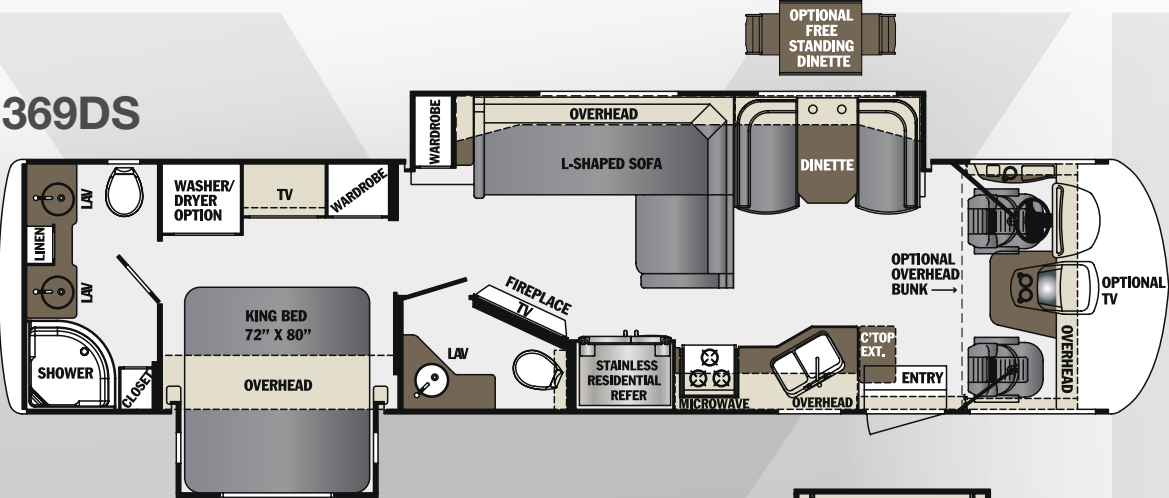
GUN METAL



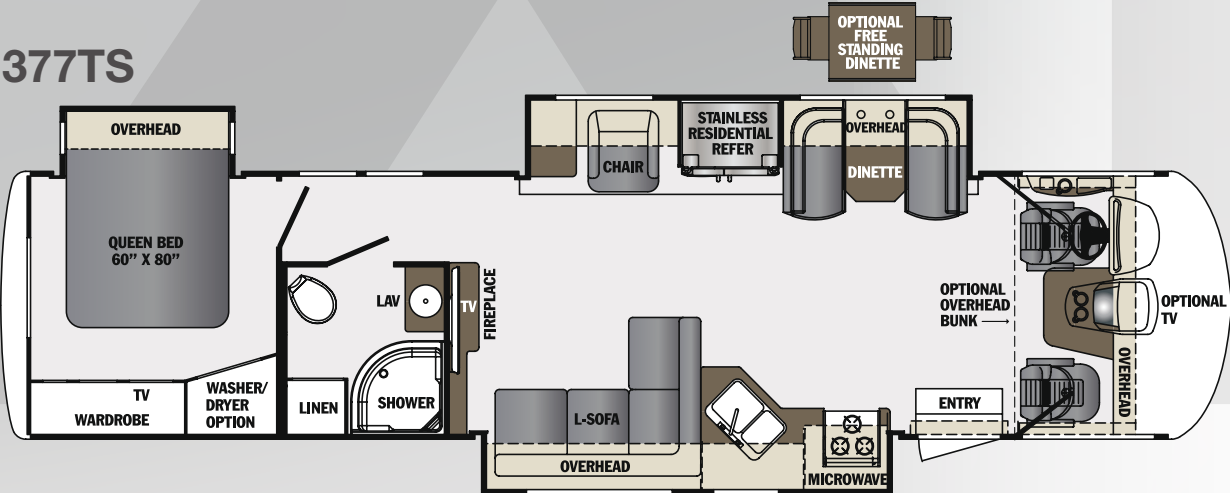
ONYX

FLOORPLANS

369DS



377TS





Forest River Owner "Digital Kit" App

Now you can have your Owner's Manual with you wherever you are. Download our FREE App from the App Store or Google Play and you'll have the information right at your fingertips.

CUSTOMER SATISFACTION



www.ForestRiverBuyLocal.com



PRE-DELIVERY INSPECTION FACILITY

20,000 square feet of quality assurance. The bare essentials for a premium product. This state-of-the-art facility gives immediate daily feedback to production for quality assurance in every unit built.

24/7 EMERGENCY ROADSIDE ASSISTANCE

For a worry-free ownership experience

Forest River includes one year of Coach-Net RV Technical & Roadside Assistance with each RV purchase. Whether new to the RV lifestyle or an experienced RV enthusiast, Forest River owners have 24/7 access to technical, operational and emergency road service coverage throughout the US & Canada. Coach-Net's fast, dependable service is just a phone call away.

Coach-Net®

RV Technical & Roadside Assistance

YOUR GEORGETOWN XL DEALER

LaMESA REC VAN

LaMesaRV.com
800-496-8778



A Berkshire Hathaway company.

Forest River, Inc.
Gas Class A Division
902 County Rd. 1
Elkhart, IN 46515
Phone: 574.367.3285
Fax 574.327.2692

www.forestriverinc.com



Learn More

Scan this barcode using a QR Reader on your smart phone to learn more about Forest River.



A Berkshire Hathaway company.

All information contained in this brochure is believed to be accurate at the time of publication. However, during the model year, it may be necessary to make revisions and Forest River, Inc., reserves the right to make all such changes without notice, including prices, colors, materials, equipment and specifications as well as the addition of new models and the discontinuance of models shown in this brochure. Therefore, please consult with your Forest River, Inc., dealer and confirm the existence of any materials, design or specifications that are material to your purchase decision. 01/17 20K

©Copyright 2017 Forest River Inc - All Rights Reserved.